

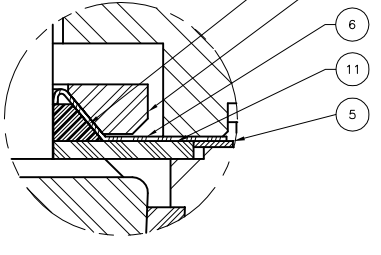
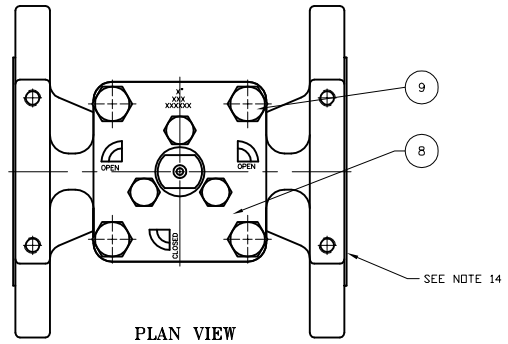
This drawing and the information herein contained is the property of FluoroSeal Specialty Valves and/or its subsidiaries and is supplied upon the express condition that the same be returned to FluoroSeal Specialty Valves upon request; all information herein contained is to be treated as secret and confidential; no reproduction of this drawing or any part thereof shall be made without the written permission of FluoroSeal Specialty Valves; acceptance of this drawing shall be deemed acceptance of the foregoing conditions.

FOR PROPOSAL PURPOSES ONLY

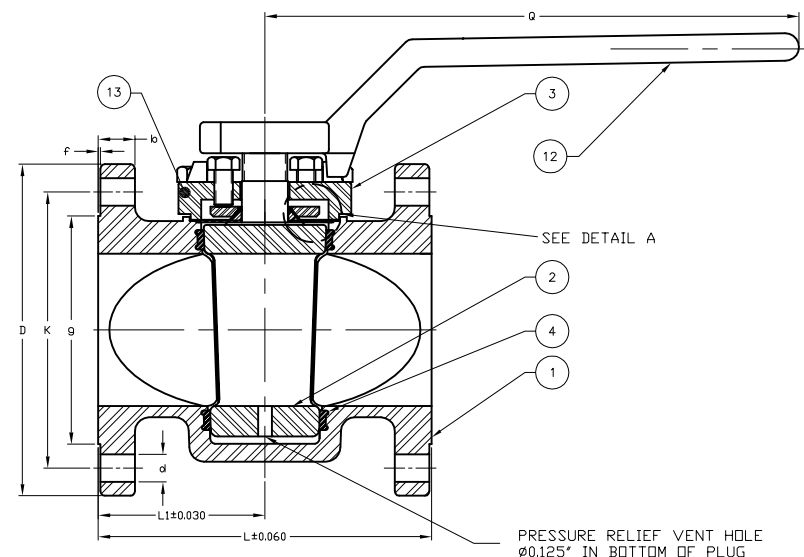
BILL OF MATERIAL				
ITEM	QTY.	DESCRIPTION	DWG#	PART#
1	1	BODY , ASTM A494, M35-1	310-5-XXX	310-5-XXX
2	1	PLUG, ASTM A494, M35-1	420-5-XXX	420-5-XXX
3	1	COVER, ASTM A494, M35-1	500-5-0XX	500-5-5XX
4	1	SLEEVE, VIRGIN DUPONT PTFE	620-0-0XX	620-5-5XX
5	1	DIAPHRAGM, VIRGIN DUPONT PTFE	660-0-0XX	660-5-0XX
6	1	METAL DIAPHRAGM, MONEL 400	680-5-0XX	680-5-0XX
7	1	THRUST WASHER, ASTM A494, M35-1	640-5-0XX	640-5-5XX
8	3	ADJUSTMENT SCREWS, ASTM A193, B7M	PURCHASE	PURCHASE
9	4	COVER BOLTS, ASTM A193, Gr B7M	PURCHASE	PURCHASE
10	1	DELTA - RING, FLEX GRAPHITE	670-0-0XX	670-5-0XX
11	1	RING, FLEX GRAPHITE	675-0-0XX	675-5-0XX
12	1	HANDLE, ASTM A216, Gr.: WCB	X-0958	700-0-0XX
13	1	HF DETECTION PAINT SOCONY 220-Y-7	PURCHASE	PURCHASE
14	1	MOUNTING BRACKET, 304 S.S.	PURCHASE	PURCHASE
15	1	COUPLING, 4140	PURCHASE	PURCHASE

D
C
B
A

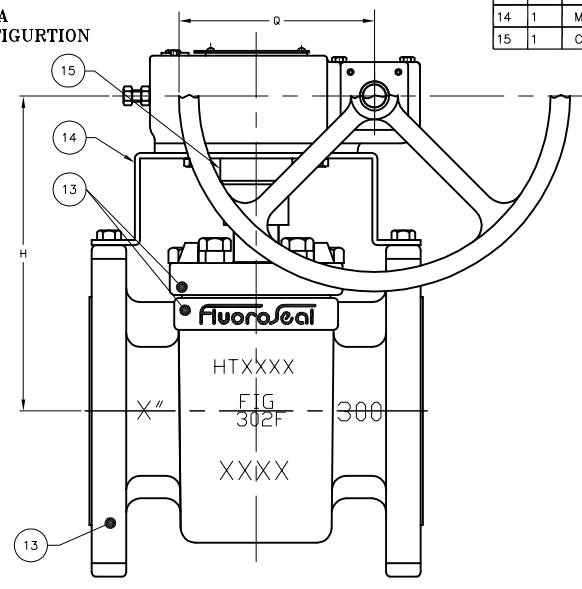
D
C
B
A



**DETAIL A
FIRE-SEAL CONFIGURATION**



PRESSURE RELIEF VENT HOLE
Ø0.125" IN BOTTOM OF PLUG



- NOTES:
- (W) WRENCH OPERATED
 - ACTUATORS OPTIONAL ON ALL SIZES
 - (EG) ENCLOSED GEAR OPERATED
 - FIRE TEST IN ACCORDANCE WITH API-607
 - INSPECTION & TESTING IN ACCORDANCE WITH API 598 & MSS SP61
 - THE MEDIUM FOR SHELL TEST IS WATER AT 925 PSI
 - THE MEDIUM FOR SEAT TEST IS AIR AT 411 PSI
 - ALL VALVES ARE DESIGNED, MANUFACTURED & TESTED IN ACCORDANCE WITH ASME B16.34
 - FACE TO FACE AS PER ASME B16.10
 - VISUAL METHOD FOR EXAMINATION OF SURFACE IRREGULARITIES AS PER MSS SP-55
 - THE WORKING PRESSURE @100 °F IS 600 PSI
 - SHELL TEST WITH HELIUM AT 160 PSI
 - NO LUBRICANTS ARE USED IN ASSEMBLY
 - THE FINISHING OF RAISED FACE IS A PHONOGRAPHIC OR CONCENTRIC V - SHAPED GROOVES, 46-49 GROOVES PER INCH, APPROX. 0.001" DEEP, USING A 0.030" TOOL NOSE RADIUS, IN ACCORDANCE WITH MSS-SP-6 & ASME B16.5 (2 PLACES)
 - THE ALLOWABLE TOLERANCE ON THE CONICAL SURFACE OF THE PLUG IS ±0.002"
 - NO LANTERN RINGS, GEARS, FITTINGS, PACKING, LUBRICANTS OR BULL PLUGS IN THE AREA OF THE BONNET PACKING IS USED
 - ALL DIMENSIONS ARE IN INCHES

TECHNICAL DATA

SIZE	L	H	D	K	g	b	f	d	Q	L1	Wt's(lbs)	Wt's(Kg)	% OF PORT
1/2"	5.50	3.69	3.75	2.63	1.38	0.56	0.060	0.63 (4X)	8.00	2.75	5	2.3	100
3/4"	6.00	3.69	4.63	3.25	1.69	0.63	0.060	0.75 (4X)	8.00	3.00	6	2.7	50
1"	6.50	4.50	4.88	3.50	2.00	0.69	0.060	0.75 (4X)	9.00	3.25	12	5.5	75
1-1/2"	7.50	5.31	6.13	4.50	2.88	0.81	0.060	0.88 (4X)	14.25	3.75	21	9.5	58
2"	8.50	6.25	6.50	5.00	3.63	0.88	0.060	0.75 (8X)	16.50	4.25	29	13.2	69
2-1/2"	11.13	6.56	8.25	5.88	4.13	1.13	0.060	0.88 (8X)	16.50	5.57	48	21.8	39
3"	11.13	6.56	8.25	6.63	5.00	1.13	0.060	0.88 (8X)	16.50	5.57	48	21.8	39
4"	12.00	7.53	10.00	7.88	6.19	1.25	0.060	0.88 (8X)	23.63	6.00	92	42	51
4" EG	12.00	9.10	10.00	7.88	6.19	1.25	0.060	0.88 (8X)	7.25	6.00	119	54	51
6" EG	15.88	10.80	12.50	10.63	8.50	1.44	0.060	0.88 (12X)	7.25	7.94	201	91.4	49

0	NPD-0219	05/12/19	M.B.	A.R.
REV	DESCRIPTION	DATE	DFTR	APVD
REVISION				
TITLE: FLUOROSEAL PLUG VALVE 1/2" - 6" HF ALKYLATION SERVICE 302F - HF - MD - MD				
SIZE	DWG NO.	FPS-302-F-HF-FS-S-15	REV	0
SCALE	DRAWN BY: ABDUSALAM	DATE: 0005/12/19	SCALE: N.T.S.	
	CHECK BY: ARDOUET	DATE: 0005/12/19	SHEET: 1/1	
6418 Transcanadian Highway W. Montreal, QC, H4T 3K4 TEL: (514) 779-0880 FAX: (514) 779-5452				
THIRD ANGLE PROJECTION DO NOT SCALE DRAWING				

8 7 6 5 4 3 2 1